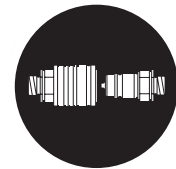


Push-to-Connect Couplings



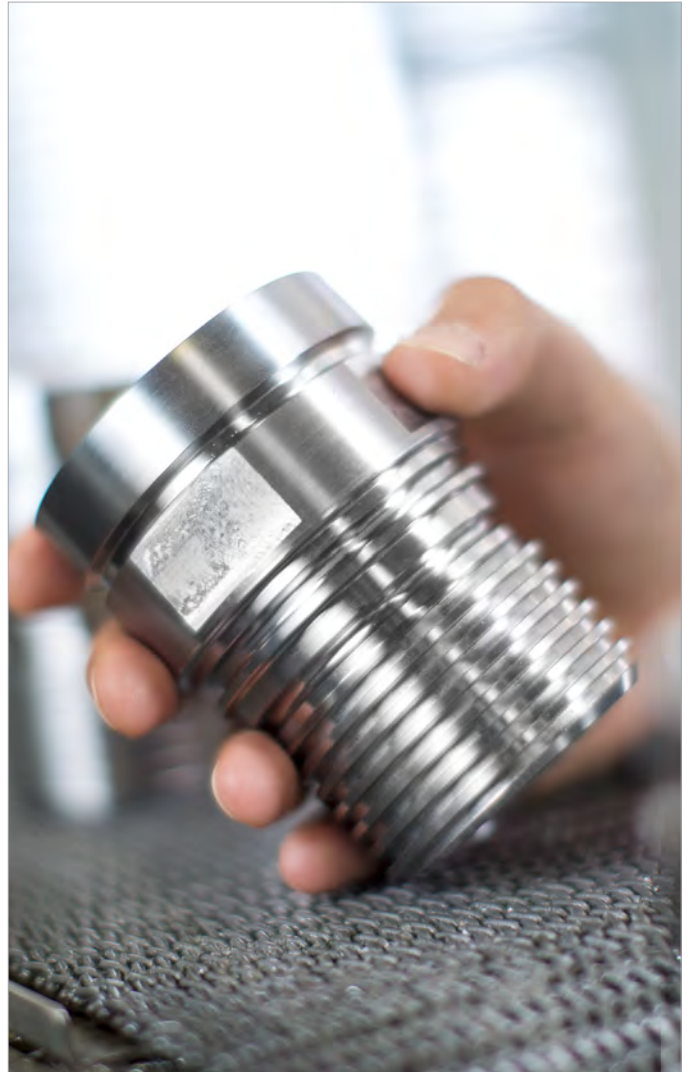
Multi Couplings



Screw-to-Connect Couplings



Product Overview  
**STAUFF Quick Release Couplings**



## STAUFF Quick Release Couplings

STAUFF couplings have proven their value for many years in practical use in hydraulic systems. The excellent quality of the couplings is the result of continual product improvement in which the experiences of users have been taken into consideration, as well. Our high production standards, combined with our quality management system certified in accordance with EN ISO 9001, assures the quality of our products.

For the technical specifications of the individual couplings please refer to the following pages of the catalog.

### Housing material

Steel according to EN 10277:  
Couplings Series FF, FU, HP-10, IA, IB, ID, BP, HUS, PS, RK/RH, FT, HH, HI, HT and MK with Zinc-Nickel coating,

Zinc-Plating and Thick-Film-Passivation  
(Chrome III)

### Seals

NBR (Buna-N®), PTFE  
ISO 3601

### Operating temperature

-20 °C ... +100 °C / -4° F ... +212° F  
with NBR (Buna-N®), PTFE  
-25 °C ... +200 °C / -13° F ... +392° F  
with FKM (Viton®)

Please contact STAUFF to require other combinations of materials.

The operating pressures specified in our catalog relate to the strength of the housing components. Standardized connector shapes may have other rated pressures, which cannot automatically be applied to the particular coupling type.

Any remodeling and modification of the couplings are prohibited. By any maintenance of our couplings it's necessary to use original STAUFF parts. In case of using of no original parts or disassembling of the couplings the warranty will be expire.

The STAUFF hydraulic couplings don't have the 94/7/EG guidance for the using in explosive field. The couplings don't have an own ignition source which could be a reason of inflame.





- Free of hexavalent chrome Cr(VI)
- ELV compliant according to 2000/53/EC (End of Life Vehicles Directive)
- REACH compliant according to 1907/2006/EC (Registration, Evaluation, Authorisation and Restriction of Chemicals)
- RoHS compliant according to 2002/95/EC (Restrictions of the Use of Hazardous Substances)



**Normative references**

EN ISO 8330:2000, ISO 5675, ISO 5676, ISO 7241, ISO 16028, AMD 1



Quick Release Couplings - Overview

| Working Pressure<br>bar / PSI          | Working Pressure Range                               |              |                |              |              |                      |                |                |              |                      |              |              |
|--|--|--------------|----------------|--------------|--------------|----------------------|----------------|----------------|--------------|----------------------|--------------|--------------|
|  | 1250 / 18130   | 1000 / 14504 | 900 / 13054    | 800 / 11603  | 700 / 10153  | 600 / 8702           | 500 / 7252     | 400 / 5802     | 300 / 4351   | 200 / 2901           | 100 / 1450   |              |
| Series                                 | FF/FH  | FU           | FH             | FO           | HP           | HU                   | UX             | IA             | IA           | IB                   | IB           |              |
|  |  |              |                |              |              |                      |                |                |              |                      |              |              |
| Material                               | Carbon Steel   | •            | •              |              |              | •                    | •              | •              | •            | •                    |              |              |
|  | Stainless Steel                                      |              |                | •            | •            |                      |                |                |              | •                    |              |              |
|  | Brass  |              |                |              |              |                      |                |                |              |                      |              | •            |
| Surface Finishing                      | Zinc-Nickel  | •            | •              |              |              | •                    |                | •              |              | •                    |              |              |
|  | Zinc-Plating and Thick-Film-Passivation (Chrome III) | •            |                |              |              | •                    | •              | •              |              |                      |              |              |
| Standard Seal Material(s) <sup>1</sup> | NBR (Buna-N®)  | •            | •              |              |              | •                    | •              | •              | •            |                      | •            |              |
|  | HNBR   |              |                |              |              |                      |                |                |              |                      |              |              |
|  | FKM (Viton®)   |              |                | •            | •            |                      |                |                |              | •                    |              | •            |
|  | PTFE   | •            | •              | •            |              | •                    |                | •              |              |                      |              |              |
| PU                                     | •  | •            |                |              |              |                      |                |                |              |                      |              |              |
| Working Temperature                    | °C   | -25 ... +100 | -25 ... +100   | -25 ... +200 | -25 ... +200 | -25 ... +100         | -25 ... +100   | -30 ... +100   | -25 ... +100 | -25 ... +200         | -25 ... +100 | -25 ... +200 |
|  | °F   | -13 ... +212 | -13 ... +212   | -13 ... +392 | -13 ... +392 | -13 ... +212         | -13 ... +212   | -22 ... +212   | -13 ... +212 | -13 ... +392         | -13 ... +212 | -13 ... +392 |
| Valve Design                           | Flat Face  | •            | •              | •            | •            |                      |                |                |              |                      |              |              |
|  | Poppet Valve   |              |                |              |              | •                    | •              | •              | •            | •                    | •            | •            |
|  | Ball Valve   |              |                |              |              |                      |                |                |              |                      |              |              |
| Connection                             | Push   | •            | •              | •            | •            | • <sup>2</sup>       | • <sup>2</sup> | •              |              |                      |              |              |
|  | Push and actuate Push-Pull Sleeve                    |              |                |              |              | •                    | •              |                |              |                      |              |              |
|  | Push and actuate Push Sleeve                         |              |                |              |              |                      |                | •              | •            | •                    | •            | •            |
|  | Screw  |              |                |              |              |                      |                |                |              |                      |              |              |
| Disconnection                          | Pull   |              |                |              |              | • <sup>2</sup>       | • <sup>2</sup> | •              |              |                      |              |              |
|  | Actuate Push-Pull Sleeve                             |              |                |              |              | •                    | •              |                |              |                      |              |              |
|  | Actuate Push Sleeve                                  | •            | •              | •            | •            |                      |                | •              | •            | •                    | •            | •            |
| Connect Under Pressure <sup>6</sup>    | Screw  |              |                |              |              |                      |                |                |              |                      |              |              |
|  | Male Tip   |              | • <sup>3</sup> |              |              |                      | • <sup>3</sup> |                |              |                      |              |              |
| Application                            | Female Body  |              |                |              |              |                      |                | • <sup>7</sup> |              |                      |              |              |
|  | Agricultural and Forestry Machinery                  |              |                |              |              | •                    | •              | •              | •            | •                    |              |              |
|  | Construction Machinery                               | •            | •              |              |              |                      |                |                |              |                      |              |              |
|  | Industrial Hydraulic                                 | •            | •              | •            |              |                      |                |                | •            | •                    | •            | •            |
|  | Offshore   |              |                |              | •            |                      |                |                |              |                      |              |              |
| Rescue and Tensioning Hydraulics       |  |              |                |              |              |                      |                |                |              |                      |              |              |
| ISO Interchange                        |  | ISO 16028    | ISO 16028      | ISO 16028    |              | ISO 7241-1, Series A |                |                |              | ISO 7241-1, Series B |              |              |
| Page                                   |  | 21           | 29/30          | 33           | 37           | 41                   | 49             | 53             | 57           | 63                   | 69           | 75           |

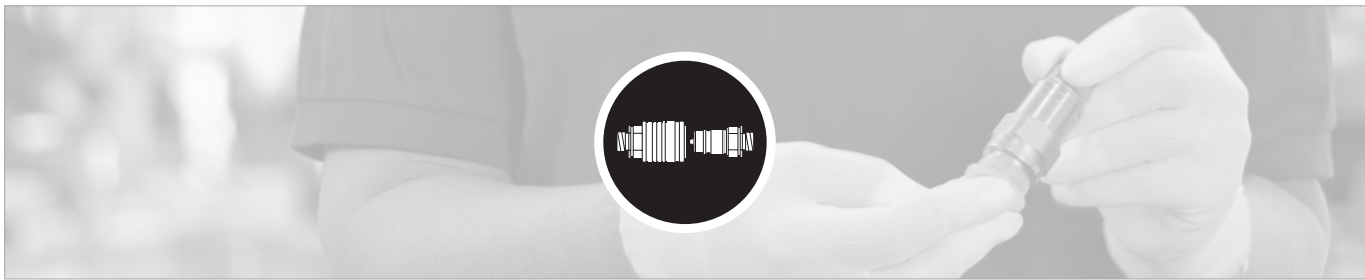
<sup>1</sup> Alternative seal materials are available on request.  
 Working Pressure depends on the nominal size.

<sup>2</sup> When mounting the Sleeve in Bulkhead  
<sup>3</sup> Up to max. 250 bar / 3626 PSI  
<sup>4</sup> Up to 33% of the Working Pressure with Tools  
<sup>5</sup> Max. 100 bar / 1450 PSI

<sup>6</sup> Only Residual Pressure  
<sup>7</sup> Female Body with ISO-A Male Tip up to the max. Working Pressure allowed  
<sup>8</sup> Max. 20 bar / 290 PSI Residual Pressure with Tools  
<sup>9</sup> Up to max. 50 bar / 725 PSI with Tools







## Push-to-Connect Couplings

STAUFF push-to-connect Couplings consist of a Female Body and a Male Tip and ensure that two tube/hose ends can be quickly and incredibly easily coupled and uncoupled without the need for a tool.

The permitted working pressures of push-to-connect Couplings are comparatively limited (depending on the respective nominal size) as they are securely locked by snap-in balls.



Series **FF/FH/FU**

Flat-face Coupling acc. to ISO 16028, Series FU Connection under pressure



Series **FH** (Stainless Steel)

Flat-face Coupling acc. to ISO 16028  
Resistant to aggressive environment and flow mediums



Series **FO** (Stainless Steel)

Flat-face Coupling  
Double shut-off valve design



Series **HP/HU**

ISO 7241-1, Series A, Push-Pull  
Series HU Connection under pressure

Valves close automatically if the Male Tip break away



Series **UX**

ISO 7241-1, Series A, Push-Pull,  
Connection under pressure

Compatible with Series HP Male Tip



Series **IA**

ISO 7241-1, Series A

Double shut-off valve design  
Compatible with Series HP



Series **IA** (Stainless Steel)

ISO 7241-1, Series A

Double shut-off valve design



Series **IB**

ISO 7241-1, Series B

Double shut-off valve design



Series **IB** (Brass)

ISO 7241-1, Series B

Double shut-off valve design



Series **IB** (Stainless Steel)

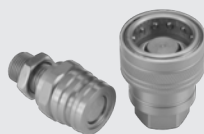
ISO 7241-1, Series B

Double shut-off valve design



Series **ID**

Double shut-off valve design



Series **BP**

ISO 5676

For use in hydraulic brake systems. The design of the coupling meets the requirements of NFU 16006 and ISO 5676



Series **HC**

Flat-face Coupling

Double shut-off valve design



Series **HD**

Flat-face Coupling

Double shut-off valve design



Series **HUS**





## Multi Couplings

The multi-coupling has been created for connecting and disconnecting several hydraulic lines at the same time. This is done by an operating lever the guide crank of which is designed for a minimum of operating force.

The connection of the hydraulic lines is done with flat face couplings. Due to the special sealing it is possible to couple against trapped pressure on the male halves (max. 4x100 bar / 5802 PSI)



**Series MK**

2 x 250 bar and 2 x 40 bar Working Pressure  
in compact or long Version available

## Screw-to-Connect Couplings

STAUFF Screw-to-connect Couplings are locked by manually screwing together the thread of the female body and the thread of the male tip as far as they will go.

Higher working pressures can sometimes be achieved with Screw-to-connect Couplings than with push-to-connect Couplings (depending on the respective nominal size) as the forces produced act on the thread rather than on the snap-in balls.



**Series HS**

ISO 14541

For heavy-duty service conditions  
and high working pressures



**Series HS (Stainless Steel)**

ISO 14541

Double shut-off valve design



**Series PS**

For hammer application  
Maximum pulse strength



**Series RH/RK**

Flat-face, Pipeline Coupling

Permit separation without any loss of medium



**Series FT**

Flat-face Coupling, connection under pressure

Tested and certified acc. API 16 D and acc.  
EUB Directive # 36



**Series HR**

Connection under pressure

Double shut-off valve design



**Series HH**

Connection under pressure

Double shut-off valve design



**Series HH (Stainless Steel)**

Stainless Steel, connection under pressure

Double shut-off valve design



**Series HI (HIB)**

ISO 14540

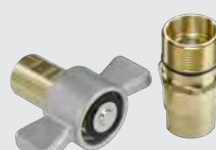
Double shut-off valve design



**Series HT**

Wing style

Double shut-off valve design



**Series HM**

Wing style

Double shut-off valve design



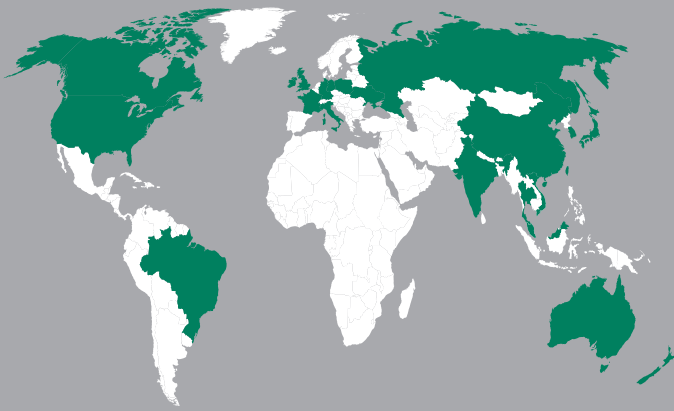
**Series HV**

Wing style  
Connection under pressure

Double shut-off valve design



## STAUFF Quick Release Couplings



### GERMANY

Walter Stauffenberg GmbH & Co. KG  
Im Ehrenfeld 4  
58791 Werdohl  
Tel.: +49 2392 91 60  
Fax: +49 2392 91 61 03  
E-Mail: sales@stauff.com

STAUFF products and services are globally available through wholly-owned subsidiaries and a tight network of authorised distributors and representatives in all major industrial regions of the world.

You can find detailed contact information at  
[www.stauff.com](http://www.stauff.com)

### AUSTRALIA

STAUFF Corporation Pty Ltd  
Tel.: +61 2 4271 9000  
sales@stauff.com.au

### BRAZIL

STAUFF Brasil Ltda.  
Tel.: +55 11 47 72 72 00  
stauff@stauffbrasil.com

### CHINA

STAUFF China  
Tel.: +86 21 68 18 70 00  
info@stauff.com.cn

### FRANCE

STAUFF S.A.S.  
Tel.: +33 2 54 50 55 50  
direction@stauffsa.com

### INDIA

STAUFF India Pvt. Ltd.  
Tel.: +91 20 67 31 4900  
sales@stauffindia.com

### IRELAND

STAUFF Ireland  
Tel.: +44 28 92 60 69 00  
sales@stauffireland.com

### ITALY

STAUFF Italia S.r.l.  
Tel.: +39 031 65 84 94  
sales@stauff.it

### CANADA

STAUFF Canada Ltd.  
Tel.: +1 416 282 46 08  
sales@stauffcanada.com

### KOREA

STAUFF Korea Ltd.  
Tel.: +82 51 266 66 66  
info@stauff.co.kr

### MALAYSIA

STAUFF South East Asia Sdn Bhd  
Tel.: +60 3 5637 7888  
sales@stauff.com.my

### NEW ZEALAND

STAUFF Corporation (NZ) Ltd.  
Tel.: +64 9 912 1530  
sales@stauff.co.nz

### POLAND

STAUFF Polska Sp. z o.o.  
Tel.: +48 58 660 11 60  
sales@stauff.pl

### RUSSIAN FEDERATION

STAUFF LLC  
Tel.: +7 495 276 16 50  
sales@stauff.ru

### THAILAND

STAUFF (Thailand) Co., Ltd.  
Tel.: +66 2 721 73 23  
sales@stauff.co.th

### UNITED STATES

STAUFF Corporation  
Tel.: +1 201 444 78 00  
sales@stauffusa.com

### UNITED KINGDOM

STAUFF UK Ltd.  
Tel.: +44 114 251 85 18  
sales@stauff.co.uk

### VIETNAM

STAUFF Vietnam Ltd.  
Tel.: +84 8 3948 1041  
sales@stauff.com.vn